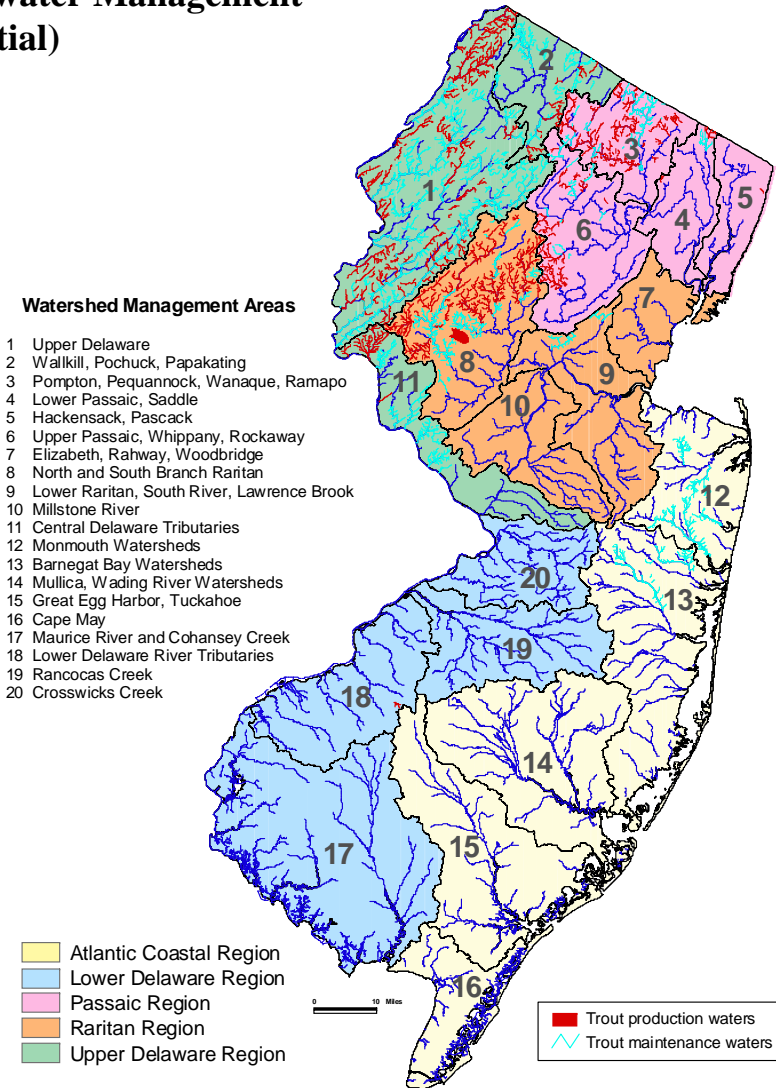


APPENDIX I

Inventory of Waterbodies for Coldwater Management (Existing and Potential)

KEY

Field	Code	Description	Code	Description
County	AT	Atlantic	MI	Middlesex
	BE	Bergen	MN	Monmouth
	BU	Burlington	MR	Morris
	CA	Camden	OC	Ocean
	CM	Cape May	PA	Passaic
	CU	Cumberland	SA	Salem
	ES	Essex	SO	Somerset
	GL	Gloucester	SU	Sussex
	HD	Hudson	UN	Union
	HT	Hunterdon	WA	Warren
	ME	Mercer		
	Owner	C	County	P
F		Federal	S	State
M		Municipal		
Access	BL	Boat Liver	FS	Full Shoreline
	BR	Boat Ramp	PS	Partial Shoreline
	CT	Car top	NB	No Boating
Trout Waters Classification	TP	Trout Production	NT	Non Trout
	TM	Trout Maintenance		
Reproducing Trout Species	BKT	Brook Trout	RBT	Rainbow Trout
	BNT	Brown Trout	LKT	Lake Trout
Trout Stocked	S	Spring	W	Winter
	F	Fall		
Coldwater Mgmt. Strategy	S-CT	Seasonal Cultured Trout	SR	Sea Run
	YR-CT	Year-Round Cultured Trout	SS	Self Sustaining
	GEN	Statewide General	STCA	Seasonal Trout Conservation Area
Trout Regulations	TS-CI	Trout-Stocked with Closed Inseason stocking dates	FFA	Fly Fishing Area
	TS-OP	Trout-Stocked Open Preseason	TTL	Trophy Trout Lake
	WTS	Wild Trout Stream	HTL	Holdover Trout Lake
	YTCA	Year-round Trout Conservation Area	BW	Boundary Water



This Page Intentionally Left Blank

Water Region: Atlantic Coastal

WR	Waterbody	County	Owner	Access	Waterbody Size		Trout Class	Reproducing Trout Species				Trout Stocked (S/F/W)	Year Last Sampled	Coldwater Mgmt Objective	Trout Regulations (yr adopted)	Comments
					Miles	Acres		Bkt	Bnt	Rbt	Lkt					
15	Birch Grove Park Pond	AT	M	FS		30	NT					S,W	1987	S-CT	GEN	The winter stocking was very popular as determined from excellent tag returns. Good shoreline access makes this a popular destination.
	Clear Stream	OC			1.46		TM									Trout move into stream from South Branch of Metedeconk
16	Dennisville Lake	CM	M	PS,CT		50	NT					S	1962	S-CT	GEN	During 1990 the lake was removed from the spring trout stocking list as a result of a no stopping ordinance enacted on Rt. 47. In 1993 an arrangement was made with the Dennisville Township Fire Department to allow trout anglers to park in the back of their building rather than on Rt. 47. The lake was placed back on the stocking list during 1994.
13	Forked River													-		
12	Garvey's Pond	MN	M			2						S	1996	S-CT		
15	Great Egg Harbor River	CA,AT	S	PS,CT			NT						2001	-	GEN	This scenic river passes through the Winslow Wildlife Management Area.
15	Hammonton Lake	AT	SM,P	PS,CT, BR		75	NT					S,F	1984	S-CT	GEN	
12	Hockhocks Brook				3.8		TM					S	1981	S-CT		
12	Holmdel Park Pond	MN	C			5						S	1974	S-CT		
13	Lake Shenandoah	OC	C	BR,PS, BL		50	NT					S	1990	S-CT	TS-OP	Fish ladder; some reports of trout downstream. No fishing at dam.
12	Mac's Pond	MN	M	NB,FS		2	NT					S	1988	S-CT		Stocked only once preseason.
12	Manasquan Reservoir	MN	NJWS A	BR,PS, BL		720	NT					S	1996	S-CT	TS-OP	Brook trout and rainbow trout stocked. Mostly brook trout caught. No fishing at dam.
12	Manasquan River	MN	M,S		11.4		TM					S,F	1983	S-CT	TS-CI	Searun brown trout.
13	Metedeconk River	OC					NT						1977	-		
13	Metedeconk River (N/Br.)	OC					TM					S,F	1971	S-CT		
13	Metedeconk River (S/Br.)	OC	M,C				NT					S,F	1971	S-CT		

WR	Waterbody	County	Owner	Access	Waterbody Size		Trout Class	Reproducing Trout Species				Trout Stocked (S/F/W)	Year Last Sampled	Coldwater Mgmt Objective	Trout Regulations (yr adopted)	Comments
					Miles	Acres		Bkt	Bnt	Rbt	Lkt					
12	Mingamahone Brook	MN	S		7.18		TM					S	1988	S-CT	GEN	
12	Mingamahone Brook (E/Br.)	MN	S				NT							-		
	Muddy Ford Brook	OC			1.17									-		
12	Mohawk Pond													S-CT		
14	Mullica River	BU,AT,CA		PS,CT										S-CT	GEN	
12	Navesink River													-		
18	Oak Pond	CA	S	FS,CT,BR		12	NT					S,F,W	1964	S-CT	GEN	Oak Pond has excellent shoreline access and a shallow boat launching area that is ideal for car top boats.
	Oyster Creek													-		
12	Pine Brook													-		
12	(Clarksmills)						NT						1997	-		
12	(Cooksmills)				2.43		TM					S	1997	-		
13	Pohatcong Lake	OC	M,P	PS,CT,BR		33	NT					S	UNK	S-CT	GEN	A new addition in 2002 this lake has good shoreline access along Rt. 9 and a small concrete boat ramp.
	Ramanassen Brook	OC			4.87									-		
12	Shadow Lake	MN	M,P			88						S	1997	S-CT		
	Shark River													S-CT		
12	(Belmar, Colts Neck)	MN					NT							-	GEN	Some reports of searun trout.
12	(Neptune)	MN	C,M		4.03		TM							-	GEN	
12	Shrewsbury River						NT							-		
	Spring Lake	MN	M	NB,FS		16	NT					S,W	1970	S-CT	GEN	
	Takanassee Lake	MN	M	NB,FS		14	NT					S,W		S-CT	GEN	Fish ladder to ocean.
	Titmouse Brook				1.01		TM							-		
13	Toms River	OC	M,S				TM					S,F	1986	S-CT YR-CT	TSI-CI, YTCA	Local chapter of T.U. very active - floatstock. Some reports of searun trout.
15	Tuckahoe River	AT,CU	S	PS,CT			NT						1977		GEN	
16	West Pond	CM	C,P	PS		3	NT					S	UNK	S-CT	GEN	This shallow pond warms quickly in the spring.
	Wreck Pond Creek													-		
12	Yellow Brook													S-CT		

Water Region: Lower Delaware

WR	Waterbody	County	Owner	Access	Waterbody Size		Trout Class	Reproducing Trout Species				Trout Stocked (S/F/W)	Year Last Sampled	Coldwater Mgmt Objective	Trout Regulations (yr adopted)	Comments
					Miles	Acres		Bkt	Bnt	Rbt	Lkt					
18	Alloway Creek	SA		PS			NT						2000	S-CT	GEN	
20	Assiscunk Creek	BU		PS			NT						2001	S-CT	GEN	
19	Big Timber Creek	CA,GL		PS			NT						2002	S-CT	GEN	
17	Bostwick Lake	CU	M	BR,CT, PS		32	NT				S		1965	S-CT	GEN	Bostwick Lake was removed from the trout stocking schedule in 2000 when the dam failed due to a rain event. The lake will be placed back on the list when dam repairs are completed. Repairs are anticipated to occur in spring 2004.
	Cohansey Creek			PS			NT							S-CT	GEN	
17	Cohansey River	SA,CU	C	PS,CT	3.2		NT				S		2000	S-CT	GEN	
19	Cooper River	CA		PS			NT						1997	S-CT	GEN	
20	Crosswicks Creek	BU		PS			NT						2000	S-CT	GEN	
19	Crystal Lake	BU	M	PS		20	NT				S,F		UNK	S-CT	GEN	
17	Giampetro Park Lake	CU	M	PS,BR, CT		11	NT				SF		UNK	S-CT	GEN	Giampetro Park Pond provides anglers with boat access and ample shoreline access. The high population density and accessibility make this lake a popular location.
18	Greenwich Lake	GL	M	PS,BR, CT		20	NT				SF		UNK	S-CT	GEN	Good shoreline access as well as a concrete boat ramp make this a popular location.
18	Grenloch Lake	GL	P	BR,CT, PS		8	NT				SF		UNK	S-CT	GEN	Partial shoreline access as well as a concrete boat ramp make this a popular location.

WR	Waterbody	County	Owner	Access	Waterbody Size		Trout Class	Reproducing Trout Species				Trout Stocked (S/F/W)	Year Last Sampled	Coldwater Mgmt Objective	Trout Regulations (yr adopted)	Comments
					Miles	Acres		Bkt	Bnt	Rbt	Lkt					
18	Haddon Lake	CA	C	CT,FS		10	NT					S	UNK	S-CT	GEN	A recent dredging project completed in 2001 has provided anglers with years of contiued use. The lake was restocked with warmwater fish, and was placed back on the stocking lists for trout and channel catfish. This lake provides anglers with almost 100% shoreline access. An artificial habitat project is slated for spring 2003.
18	Harrisonville Lake	GL	S	PS,CT		30	NT					S	1966	S-CT	GEN	
17	Iona Lake	GL	M	PS,CT		36	NT					SF	1967	S-CT	GEN	
18	Lake Nariticon - see Swedesboro Lake						NT							S-CT	GEN	
19	Laurel Pond	BU	M	FS		2.5	NT					S	UNK	S-CT	GEN	This Burlington County park pond is popular among local anglers. There is 100% shoreline access. The pond also has a good warmwater fishery. The lake was removed from the winter trout stocking list due to conflicts with owners and anglers.
18	Mantua Creek	GL		PS			NT						2000	S-CT	GEN	
17	Mary Elmer Lake	CU	M	PS,BR,CT		18	NT					SF	1957	S-CT	GEN	
18	Masons Run	CA	P	R	1.05		TP	X					2002	SS		The unique stream is the only current documented, reproducing brook trout stream in south Jersey. Situated in close proximity to the Pine Hill Golf Course, a sedimentation event resulted in the formation of the Pine Hill Conservation Management Team. The partners of this group comprised of NJF&W, USFWS, Trout Unlimited, Camden County Soil District, Borough of Pine Hill, and the Pine Hill Golf Course meet bi-monthly to discuss issues relating to Masons Run and surrounding areas.
17	Maurice River	CU	S	PS,CT	11		NT					SF	2002	S-CT	GEN	

WR	Waterbody	County	Owner	Access	Waterbody Size		Trout Class	Reproducing Trout Species				Trout Stocked (S/F/W)	Year Last Sampled	Coldwater Mgmt Objective	Trout Regulations (yr adopted)	Comments
					Miles	Acres		Bkt	Bnt	Rbt	Lkt					
18	Mullica Hill Pond	GL	P	PS,CT		10	NT					SW	1970	S-CT	GEN	
18	Oldmans Creek	GL,SA		PS			NT						2000	S-CT	GEN	
19	Pennsauken Creek	BU,CA		PS			NT						1993	S-CT	GEN	
20	Prosperstown Lake	OC	S	BR,PS,CT		80	NT					S		S-CT	TSCI	The WMA lake has partial shoreline access along the parking area, as well as a fishing pier. Anglers that want to fish from a boat will have to paddle or row, due to motor restrictions. A concrete ramp is present. This is always a popular destination during the spring trout season.
18	Raccoon Creek	GL		PS			NT						1976	S-CT	GEN	
19	Rancocas Creek	BU		PS			NT						2002	S-CT	GEN	
19	Rancocas Creek (SW/Br.)	BU		PS			NT					S	2002	S-CT	GEN	
18	Riverview Beach Pond	SA	M	FS,CT		5	NT					SW	UNK	S-CT	GEN	
18	Rowands Pond	CA	S	FS		3	NT					SW	1969	S-CT	GEN	
18	Salem River	SA		PS			NT						2000	S-CT	GEN	
18	Schadlers Sand Wash Pond	SA	P	PS		5	NT					SF	UNK	S-CT	GEN	
17	Shaws Mill Pond	CU	S	BR,CT,FS		30	NT					SW	2002	S-CT	GEN	
17	Stow Creek	CU,SA		PS			NT						2000	S-CT	GEN	
18	Swedesboro Lake	GL	M	CT,PS		20	NT					SF	2000	S-CT	GEN	Parital shoreline access, limited parking along road.
20	Sylvan Lake	BU	M,P	BR,CT,PS		12	NT					SF	1970	S-CT	GEN	Sylvan lake was recently dredged in 2002. A small concrete boat launch was created in addition to a fishing pier. Artificial habitat structures were deployed to provide cover for warmwater fish.
18	Westville Lake	GL	M	PS		1.5	NT					S	UNK	S-CT	GEN	

Water Region: Passaic

WR	Waterbody	County	Owner	Access	Waterbody Size		Trout Class	Reproducing Trout Species				Trout Stocked (S/F/W)	Year Last Sampled	Coldwater Mgmt Objective	Trout Regulations (yr adopted)	Comments
					Miles	Acres		Bkt	Bnt	Rbt	Lkt					
3	Apshawa Brook	PA	P		1.67		TP		X				1988	SS	GEN	
6	Bear Swamp Brook	BE	S,P		2.16		TP	X					1971	SS	WTS	
4	Barbour's Pond	PA	C	FS,NB		12	NT				S,W		1952	S-CT	GEN	
	Beaver Brook															
6	Splitrock Reservoir Dam downstream to Meriden Rd. Bridge	MR	S,P		1.24		TP	X					1991	SS	GEN	
6	Meriden Rd. bridge to Rockaway River	MR	P				NT				S		1991	S-CT	GEN	
	Beaver Brook - Unnamed Tributaries															
6	Trib. (Meriden)	MR	C		0.24		TP	X					1991	SS	GEN	very small; non-blue-line stream
6	Trib. (Meriden)	MR	C		0.44		TP	X			S		1991	SS	GEN	very small; non-blue-line stream
3	Beech Brook	PA	S,C,P		1.99		TP*						2003	SS	GEN*	* Pending
3	Belcher Creek	PA	P				NT						1970		GEN	
	Black Brook															
6	(Upper Passaic River drainage)	MR	F,P										1969		GEN	
6	(Whippany River drainage)	MR	P										1980		GEN	
3	Blue Mine Brook															
	Source - Snake Den Road bridge	PA	S,P		1.04		TP	X					1988	SS	GEN	
	Snake Den Road bridge - Wanaque Reservoir	PA	S,P		0.92		TM						1988		GEN	
4	Branch Brook Park Lake	ES	L	BL,FS, NB		24	NT				S		1984	S-CT	GEN	
6	Burnham Park Pond	MR	M	NB,FS		4	NT				S			S-CT	GEN	very popular spring trout fishery.
3	Burnt Meadow Brook	PA	P,S		4.18		TP	X					1986	SS	GEN	
3	Canistear Reservoir	SU	M	BR,FS		350	TM				S		1999	S-CT	GEN	Fishing by permit; marginal holdover trout fishery

WR	Waterbody	County	Owner	Access	Waterbody Size		Trout Class	Reproducing Trout Species				Trout Stocked (S/F/W)	Year Last Sampled	Coldwater Mgmt Objective	Trout Regulations (yr adopted)	Comments
					Miles	Acres		Bkt	Bnt	Rbt	Lkt					
3	Charlotteburg Reservoir	PA	M	NONE		375	TM						Not Sampled		GEN	Newark Watershed; no fishing allowed
3	Cherry Ridge Brook	SU	S,M,P				NT						1974		GEN	
4	Clarks Pond	ES	M	FS,NB		7	NT				S		1969	S-CT	GEN	Shocked pre-season only; sioned for derby request.
3	Clinton Brook	PA	M		1.96		TP		X				1974	SS	GEN	Greatly affected by releases from Clinton Res.; no fishing allowed
3	Clinton Reservoir	PA	M	BR,FS		423	TM				S		2001	YR-CT	HTL	Newark Watershed; fishing by permit
3	Cooley Brook	PA	S,P		2.36		TP	X	X				2001	SS	GEN	
5	Cresskill Brook	BE	P		1.14		TP	X					1983	SS	GEN	Only identified T.P. stream in the Hackensack Drainage
	Crooked Brook - Unnamed Tributaries															
6	Trib. (E. of Sheep Hill)	MR	P		1.1		TP	X					1995	SS	GEN	
3	Cupsaw Brook	P	P,S				NT						1985		GEN	
6	Dead River	SO	P				NT						1969		GEN	
6	Den Brook	MR	P,M				NT						1988		GEN	
	Den Brook - Unnamed Tributaries															
6	Trib. (West of Shongum Lake)	MR	C,P		1.25		TP	X					1988	SS	GEN	
3	Fox Brook	BE	P				NT						1968		GEN	
4	Goffle Brook	PA	M				NT						1968		GEN	No potential for coldwater fishery
6	Grannis Brook	MR	P				NT						1969		GEN	No potential for coldwater fishery
6	Great Brook	MR	P,F				NT						1969		GEN	
3	Green Brook	PA	S,P		3.37		TP		X				2003	SS	GEN	
6	Green Pond	MR	P	R		499	TM						1951		GEN	Fishing allowed only to Lake Assoc. members - trout stocked
6	Green Pond Brook															
	Green Pond Outlet to Picatinny Lake	MR	P,F		3.13		TP	X					1969	SS	GEN	
	Picatinny Lake to Rockaway River	MR	P,F				NT						Not Sampled		GEN	

WR	Waterbody	County	Owner	Access	Waterbody Size		Trout Class	Reproducing Trout Species				Trout Stocked (S/F/W)	Year Last Sampled	Coldwater Mgmt Objective	Trout Regulations (yr adopted)	Comments
					Miles	Acres		Bkt	Bnt	Rbt	Lkt					
3	Green Turtle Pond	PA	S	BR,FS		40	NT						1983		GEN	Should be considered for spring and winter trout stocking
6	Greenwood Lake	PA	S,P	BR,PS		1920	TM						1997		BW	
5	Hackensack River	BE,HD	M,P				NT				S		1976	S-CT	GEN	
6	Harmony Brook	MR	P		1.19		TP		X	X			2001	SS	GEN	
6	Harrisons Brook	SO	P				NT						1969		GEN	Dropped from trout stocking program 2001
3	Havemeyer Brook	BE	P		1.83		TP	X					1983	SS	GEN	
3	Hewitt Brook	PA	S,P		2.44		TP	X					2001	SS	GEN	
	Hibernia Brook															
6	Source to first Green Pond Road bridge downstream of Lake Emma	MR	S,M,P		1.28		TP	X					1995	SS	GEN	
6	First Green Pond Road bridge to Beaver Brook	MR	S,M,P		2.97		TM				S		1995	YR-CT	GEN	Trout stocked downstream of Lake Ames
	Hibernia Brook - Unnamed Tributaries															
6	Trib. (Lake Ames)	MR	F,M		1.5		TP	X					1985	SS	GEN	
3	High Mountain Brook	PA	S,P		2.99		TP	X					1982	SS	GEN	
4	Hohokus Brook	BE	C,P				NT				S		1968	S-CT	GEN	May be opportunity to expand trout stocking in Ridgewood
6	Indian Grove Brook	MR	F,P		2.08		TP			X			1996	SS	WTS	
5	Indian Lake	BE	M	FS		6	NT				S		1977	S-CT	GEN	
6	Jackson Brook														GEN	
6	Source downstream to Hurd Park	MR	C,P		2.7		TP		X				2001		WTS	Good number of harvestable size trout
6	Hurd Park downstream to the Rockaway	MR	C,P				NT						Not Sampled		GEN	
3	Jennings Creek	PA	S		1.03		TP	X					1963	SS	GEN	No data to indicate TP waters
6	Jersey City Reservoir	MR	P	PS		775	TM						1996		GEN	Shoreline fishing by permit only
3	Kanouse Brook	PA	M,P		4.49		TP	X					1988	SS	GEN	Newark Watershed - Fishing not allowed

WR	Waterbody	County	Owner	Access	Waterbody Size		Trout Class	Reproducing Trout Species				Trout Stocked (S/F/W)	Year Last Sampled	Coldwater Mgmt Objective	Trout Regulations (yr adopted)	Comments
					Miles	Acres		Bkt	Bnt	Rbt	Lkt					
3	Kikeout Brook (see Kakeout Brook)	MR	P				TP*		X				2003	SS	GEN	* Pending
3	Lake Stockholm Brook	SU	P		2.29		TP	X					1997	SS	GEN	
3	Little Pond Brook	BE	P		1.13		TP	X	X				1995	SS	GEN	
6	Loantaka Brook	MR	C,P				NT						1969		GEN	
	Macopin River															
	Echo Lake Reservoir to Pequannock River	PA	M		1.84		TP		X				2001	SS		Newark Watershed; fishing not allowed
	Upstream of Echo Lake Reservoir	PA	M,P				NT						Not Sampled			
	Meadow Brook															
	Skyline Lake downstream to E. Belmont Ave bridge	PA	P				NT						No Data			
3	E. Belmont Ave bridge downstream to Wanaque river	PA	P		0.89		TP		X				1993	SS	GEN	
	Mill Brook															
6	Source to Rt. 10	MR	P		3.05		TP	X	X		S		1997	SS YR-CT	GEN	Consider dropping from trout stocking program; good number of harvestable size native trout - consider for WTS.
6	Rt 10 to Rockway river	MR	P		0.65		TM						1998		GEN	Adult stocked and native trout present
6	Trib. (North of Union Hill)	MR			0.5		TP							SS	GEN	
5	Mill Pond (see Electric Light Pond)	BE		PS		9	NT				S,W		1984	S-CT		
3	Monksville Reservoir	PA	S	BR,BL,FS		505	TM				S		2002	YR-CT	HTL	
3	Mossmans Brook (aka Clinton Brook)	PA	M		3.56		TP		X				1988	SS		Newark Watershed - fishing not allowed
6	Mt. Hope Pond	MR	M			18	NT				S,W		1985	S-CT	GEN	Marginal trout maintenance - needs to be re-sampled
6	Mt. Tabor Brook	MR	P				NT						1969		GEN	
3	Oak Ridge Reservoir	PA	P	BR,FS		482	TM						Not Sampled		GEN	Newark Watershed; fishing by permit

WR	Waterbody	County	Owner	Access	Waterbody Size		Trout Class	Reproducing Trout Species				Trout Stocked (S/F/W)	Year Last Sampled	Coldwater Mgmt Objective	Trout Regulations (yr adopted)	Comments
					Miles	Acres		Bkt	Bnt	Rbt	Lkt					
6	Ohio Brook	MR	C,P		0.71		TM						1991		GEN	
4	Oldham Pond	PA	M			15	NT				S		Not Sampled		GEN	
3	Pacack Brook	SU	M				NT						1974		GEN	Newark Watershed; fishing not allowed
5	Pascack Creek	BE	P				NT				S		1968	S-CT	GEN	
	Passaic River															
6	Source downstream to Osborn Pond	MR	F,P		5.11		TP		X	X			1999	SS	WTS	WTS to Rt. 202 bridge
4,6	Osborn Pond to Dundee Lake dam	MR,PA	F,C,M,P				NT				S		1980	S-CT	GEN	
4	Dundee Lake dam to confluence with Second River	PA,ES	M,P				NT/SE						1999		GEN	Tidal freshwater below Dundee Dam
4	Peckman River	ES	M,P		2.61		NT						1999		GEN	TM classification pending trout stocked by Friends of the Peckman River.
	Pequannock River															
3	Source to Hamburg Turnpike bridge in Pompton Lakes Boro	SU,MR,PA	M,P		20.98		TP	X	X		S		2001	SS YR-CT	WTS, STCA	One mile section between Charlottsburg Res. and Macopin Res. is pending
3	Hamburg Turnpike bridge in Pompton Lakes Boro to confluence with Wanaque River	MR, PA	M,P		0.85		TM						1991			
3	Confluence with Wanaque River downstream to confluence with Pompton River	MR,PA	M,P				NT						1980			
	Pequannock River - Unnamed Tributaries															
3	Trib. (Copperas Mtn.)	MR	P		2.27		TP	X	X				2001	SS	GEN	
3	Trib. (Lake Kampfe)	PA	S,P		0.35		TM						1987		GEN	
3	Trib. (Lake Kampfe)	PA	P				NT						1987		GEN	
3	Trib. (Smoke Rise)	MR	C,P		0.71		TP	X					?		GEN	

WR	Waterbody	County	Owner	Access	Waterbody Size		Trout Class	Reproducing Trout Species				Trout Stocked (S/F/W)	Year Last Sampled	Coldwater Mgmt Objective	Trout Regulations (yr adopted)	Comments
					Miles	Acres		Bkt	Bnt	Rbt	Lkt					
3	Pompton Lake	PA	M	BR,PS			NT					S	1997	S-CT	GEN	
3	Pompton River	MR,PA	M,P				NT					S	1997	S-CT	GEN	
4	Preakness Brook	PA	M,P		0.95		TP	X					1981	SS	GEN	
	Primrose Brook															
6	Source downstream to Lees Hill Rd. bridge	MR	F,P		3.6		TP	X	X				1999	SS	GEN	
6	Lees Hill Road bridge to Great Brook	MR	F,P				NT						1987		GEN	
3	Ramapo River	BE,PA	C,M,P				NT					S,F	2003	S-CT	GEN	
	Ramapo River - Unnamed Tributaries															
3	Trib. (Oakland)	BE	P		1.32		TP	X					1986	SS	GEN	
3	Ringwood Brook	PA	S		1.42		TM					S	1990	YR-CT	GEN	
6	Rockaway River															
	Longwood Lake downstream to Washington Pond	MR	S,M,P				NT					S,F	1988	S-CT	GEN	
6	Washington Pond downstream to Route 46	MR	S,M,P		1		TM					S,F	1988	YR-CT	GEN	
6	Route 46 downstream to the Passaic River	MR	S,M,P				NT					S,F	1988	S-CT	GEN	
6	Russia Brook															
	Source to Lake Hartung	MR	S,P				NT						1997		GEN	
	Lake Hartung dam to Lake Swannanoa	MR	P		2.3		TM					S	1998	S-CT	GEN	
	Russia Brook - Unnamed Tributaries															
6	Trib. (Mt. Paul)	MR	P		1.52		TP	X					1998	SS	GEN	
	Saddle River															
4	Stateline downstream to Rt. 2 bridge	BE	P		1.45		TP						2002	SS	WTS	Good number of harvestable size trout
4	Rt. 2 bridge downstream to Allendale Rd. bridge	BE	P		2.06		TM					S	1968	YR-CT	GEN	
4	Allendale Road bridge to Passaic River	BE	C,P				NT/SE					S	1980	S-CT	GEN	

WR	Waterbody	County	Owner	Access	Waterbody Size		Trout Class	Reproducing Trout Species				Trout Stocked (S/F/W)	Year Last Sampled	Coldwater Mgmt Objective	Trout Regulations (yr adopted)	Comments
					Miles	Acres		Bkt	Bnt	Rbt	Lkt					
3	Scarlet Oak Pond	BE	C	NB,FS		22	TM					S	1994	YR-CT	GEN	Trout stocked pre-season only; boat fishing not allowed
3	Sheppard Lake	PA	S	BR,FS		74	TM					S,W	1999	YR-CT	HTL	
6	Speedwell Lake	MR	M	NB,FS		23	NT					S,W	1965	S-CT	GEN	
6	Splitrock Reservoir	MR	M	CT		550	TM						2000		GEN	
3	Stag Brook (aka Clove Brook)	BE	P		1.82		TP	X					2003	SS	GEN	Susceptible to extremely low summer flows
3	Stone House Brook	MR	P				NT						1969		GEN	
6	Stony Brook	MR	P				NT						1969		GEN	
5	Tenakill Brook	BE	P				NT				S	No Data	S-CT	GEN		
5	Tienakill Creek – see Tenakill Brook															
3	Timber Brook	MR	M,S				NT						1985		GEN	
4	Verona Park Lake	ES	C	BL,FS			NT				S,W	1979	S-CT	GEN		
	Wallace Brook	MR	C		1		TP		X				2000	SS	GEN	
3	Wanaque Reservoir	PA	P	PS			TM						1991		GEN	Shoreline fishing by permit
3	Wanaque River	PA	S,M,P			2310	TM/NT				S,F	1992	S-CT YR-CT	GEN		
	Wanaque River - Unnamed Tributaries															
3	Trib. (S. of Jennings Creek)	PA	S		0.78		TP	X					No Data	SS	GEN	
3	West Brook	PA	P		4.49		TP			X			2002	SS	WTS	
4	West Hudson County Park Pond	HD	C	NB,FS		4	NT				S	1984	S-CT	GEN	Pre-season trout stocking only	
	Whippany River															
	Source to Tingley Road bridge	MR	M,P		2.0		TP		X	X			2002	SS	WTS	Good number of harvestable size trout
	Tingley Road bridge to Whitehead Road bridge	MR	M		1.0		TP		X		S	2002	SS S-CT	GEN		
	Whitehead Road bridge to Rockaway River	MR	M,P,S				NT				S	1980	S-CT	GEN	Sample by freshwater biomonitoring in 2000.	
	Whippany River - Unnamed Tributaries															

WR	Waterbody	County	Owner	Access	Waterbody Size		Trout Class	Reproducing Trout Species				Trout Stocked (S/F/W)	Year Last Sampled	Coldwater Mgmt Objective	Trout Regulations (yr adopted)	Comments
					Miles	Acres		Bkt	Bnt	Rbt	Lkt					
6	Trib. (Brookside) aka Dismal Brook	MR	M		2.48		TP			X		2001	SS	GEN		
6	Trib. (E. of Brookside)	MR	P		2.01		TM					1994		GEN		
6	Trib. (E. of Washington Valley)	MR	P		2.18		TM					1994		GEN		
6	Trib. (Gillespie Hill)	MR	P		1.67		TP	X				1987	SS	GEN		
6	Trib. (Shongum Mtn.)	MR	C,P				NT					?		GEN		
4	Whites Pond	BE	M	NB,FS		6	NT				S	1969	S-CT	GEN		
5	Woodcliff Lake	HD	C	NB,FS		15	NT				S,W	1996	S-CT	GEN		

Water Region: Raritan

WR	Waterbody	County	Owner	Access	Waterbody Size		Trout Class	Reproducing Trout Species				Trout Stocked (S/F/W)	Year Last Sampled	Coldwater Mgmt Objective	Trout Regulations (yr adopted)	Comments	
					Miles	Acres		Bkt	Bnt	Rbt	Lkt						
10	Amwell Lake	HT	S	FS, CT	-		NT					S,W	9/15/1970	S-CT	GEN	Seasonal trout fishery. Elevated summer water temperatures do not support holdover trout.	
8	Beaver Brook																
	Source downstream to Reformatory Rd	HT	P,S		3.57	-	TP		X			-	9/1/1996	SS	GEN		
	Reformatory Rd bridge downstream to Beaver Ave (Annandale)	HT	P,S		0.94	-	TM					-	9/1/1998	SS-S-CT	GEN		
	Beaver Ave bridge downstream to lower most I-78 bridge	HT	P		1.45	-	TP		X			S	8/28/2001	SS-S-CT	GEN		
	Lower most I-78 bridge to confluence with S/Br Raritan	HT	M,P		0.63	-	TM					S	7/15/1996	SS-S-CT	GEN		
	Bamboo Brook - see Herzog																
8	Black Brook	HT	P,S		1.12	-	TP	X		X		-	9/15/1980	SS	GEN	Access limited to Clinton Wildlife Management Area	
8	Black River – see also Lamington River																
	source downstream to Rt 206 bridge	MR	P,S			-	NT					-			GEN		
	Rt 206 downstream to Rhinehart Bk confluence	MR	P,S		3.5	-	TM						8/28/1969	S-CT	GEN		
	see Lamington River for remaining information																
8	Boulder Hill Brook	HT	P		2.12	-	TP		X			-		SS	GEN		
	Buffalo Hollow Brook - see Wilhoughby																
8	Burnett Brook	MR	M,P		4.64	-	TP		X			-	8/7/1969	SS	WTS		
	Buskill Brook				0.63		TM							-			
8	Capoolong Creek	HT	P,S		5.61	-	TP		X			S	8/12/2002	SS	GEN		

WR	Waterbody	County	Owner	Access	Waterbody Size		Trout Class	Reproducing Trout Species				Trout Stocked (S/F/W)	Year Last Sampled	Coldwater Mgmt Objective	Trout Regulations (yr adopted)	Comments
					Miles	Acres		Bkt	Bnt	Rbt	Lkt					
8	Cold Brook	HT	P,M	None	3.31	-	TP		X			-	8/22/2002	SS	WTS	Excellent in-stream habitat, good flow even under recent drought conditions
8	Dawsons Brook	MR	P		2.04	-	TP	X				-	8/12/1969	SS	GEN	
9	D & R Canal	SO,ME	S			-	NT					S		S-CT	GEN	Stocked from access road to Beef-a-lo Farm to Whitehead Rd bridge for a seasonal trout fishery. Elevated water temperatures do not support holdover trout.
7	Diamond Mill Pond	ES	C		-	4	NT					S	6/20/1974	S-CT	GEN	Seasonal trout fishery. Elevated summer water temperatures do not support holdover trout.
8	Drake's Brook													-		
	source downstream to Hillside Ave Bridge	MR	P,M		3.14	-	TM					S	7/24/1990	YR-CT	GEN	
	Hillside Ave bridge downstream to confluence Rariatn River S/Br	MR	P			-	NT					S	8/25/1987	S-CT	GEN	Seasonal trout fishery. Elevated summer water temperatures do not support holdover trout.
	Drake's Brook - Unnamed Tributaries															
	Trib. (Mt. Olive)	MR	P		0.76	-	TP	X				-	8/16/1994	SS	GEN	
	Trib.				1.44		TM									
8	Electric Brook	MR	P,C		2.41	-	TP	X	X			-	8/25/1981	SS	GEN	
9	Englishtown Mill Pond	MN	M,P		-	6	NT					S	9/20/1965	S-CT	GEN	Seasonal trout fishery. Elevated summer water temperatures do not support holdover trout.
9	Farrington Lake	MI	M,P,	PS, BR	-	290	NT					S,F	6/23/2000	S-CT	GEN	Very popular during spring and fall trout stocking seasons, however, elevated summer water temperatures do not support holdover trout
8	Flanders Brook	MR	P,S		2.29	-	TP	X	X	X		-	8/26/1998	SS	WTS	One of the few streams within New Jersey which supports reproducing populations of all three stream species of trout
8	Frog Hollow Brook	HT	P		2.73	-	TP	X		X		-	7/13/1995	SS	GEN	

WR	Waterbody	County	Owner	Access	Waterbody Size		Trout Class	Reproducing Trout Species				Trout Stocked (S/F/W)	Year Last Sampled	Coldwater Mgmt Objective	Trout Regulations (yr adopted)	Comments
					Miles	Acres		Bkt	Bnt	Rbt	Lkt					
12	Garvey's Pond	MO	M	PS	-	2	NT					S	9/19/1996	S-CT	GEN	Very popular during the spring stocking period, in an area with limited freshwater fishing opportunities
8	Gladstone Brook	SO	P	None	2.29	-	TP		X			-	8/14/2002	SS	GEN	Loss of gradient and extensive erosion from adjacent pastures reproducing trout populations is limited
7	Green Brook															
	source downstream to Rt 22 bridge	UN	P,M		3.43	-	TM					S	6/9/1976	YR-CT	GEN	
	Rt 22 bridge downstream to confluence with Bound Brook	UN	P,M			-	NT					-	9/25/1997	-	GEN	
8	Guinea Hollow Brook	HT	P	None	2.16	-	TP		X			-	8/12/81	SS	GEN	
8	Hacklebarney Brook	MR	S,P		1.23	-	TP	X				-	9/18/1970	SS	GEN	
8	Herzog Brook	SO	P	None	4.17	-	TP	X	X			-	7/9/1996	SS	WTS	
8	Hickory Run	HT	P		0.78	-	TP			X		-	8/23/2002	SS	WTS	Historically designated with rainbow trout reproduction recent sampling in 2002 yielded only brook trout reproduction with only 1 rainbow captured.
8	Hollow Brook	HT	P		3.07	-	TP	X	X			-	7/13/1983	SS	GEN	
12	Holmdel Park Pond	MO	C	FS	-	5	NT					S	5/10/1974	S-CT	GEN	
9	Hook's Creek Lake	MI	S	FS	-	10	NT					S,W		S-CT	GEN	Seasonal trout fishery. Elevated summer water temperatures do not support holdover trout.
8	India Brook															
	Source downstream to Mountainside Ave, Mendham	MR	M,P		3.56	-	TP	X	X			-	8/24/1994	SS	WTS	
	Mountainside Ave to Rt 24, Ralston	MR	P,M		0.44	-	TP	X	X			S	8/18/1994	SS,YR-CT	GEN	
	Rt 24 downstream to confluence with Raritan River N/Br	MR	P		0.48	-	TP	X	X			-	7/9/1982	SS	GEN	

WR	Waterbody	County	Owner	Access	Waterbody Size		Trout Class	Reproducing Trout Species				Trout Stocked (S/F/W)	Year Last Sampled	Coldwater Mgmt Objective	Trout Regulations (yr adopted)	Comments
					Miles	Acres		Bkt	Bnt	Rbt	Lkt					
9	Ireland Brook	MI	P,M				NT					S	9/26/1996	S-CT	GEN	
8	Krueger's Creek	MR	P		1.22	-	TP	X					8/24/1989	SS	GEN	
9	Lake Papaiani	MI	M	FS			NT					S	6/18/1997	S-CT	GEN	Stocked once during pre-season stocking period only. Seasonal trout fishery. Elevated summer water temperatures do not support holdover trout.
8	Lamington River--see also Black River															
	see Black River listing for information upstream of Rhinehart Brook confluence															
	Rhinehart Brook confluence to Camp Brady bridge	MR,SO	S,P		5.68	-	TP		X			-	7/15/1969	SS	GEN	
	Camp Brady Bridge downstream to Rt 523 bridge	SO	P		2.72	-	TM					-	7/25/1969	S-CT	GEN	
	Rt 523 bridge downstream to Raritan River N/Br	SO	P,M			-	NT					S	10/12/1973	S-CT	GEN	Seasonal trout fishery. Elevated summer water temperatures do not support holdover trout.
	Lamington River - Unnamed Tributaries															
8	Trib. (Ironia)	MR	P		0.58	-	TP	X				-		SS	GEN	
9	Lawrence Brook	MI	P,M			-	NT					S	7/1/1977	S-CT	GEN	Seasonal trout fishery. Elevated summer water temperatures do not support holdover trout.
8	Ledgewood Brook	MR	P		1.04		TP		X			-	9/13/2002	SS	WTS	
8	Little Brook	HT	P		2.06	-	TP	X				-	9/12/1969	SS	GEN	
	Lomerson Brook - see Herzog Brook															
7	Lower Echo Park Pond	UN	C	FS	-	6	NT					S,W	8/14/1979	S-CT	GEN	Seasonal trout fishery. Elevated summer water temperatures do not support holdover trout.
8	McVickers Brook	MR	P		1.87	-	TM					-	7/11/1996	-	GEN	

WR	Waterbody	County	Owner	Access	Waterbody Size		Trout Class	Reproducing Trout Species				Trout Stocked (S/F/W)	Year Last Sampled	Coldwater Mgmt Objective	Trout Regulations (yr adopted)	Comments
					Miles	Acres		Bkt	Bnt	Rbt	Lkt					
9	Middle Brook (E/Br.)	SO	P		4.47	-	TM					S	9/7/1989	S-CT	GEN	Seasonal trout fishery. Elevated summer water temperatures do not support holdover trout.
7	Milton Lake	UN	M	PS	-	10	NT					S	9/12/1980	S-CT	GEN	Seasonal trout fishery. Elevated summer water temperatures do not support holdover trout.
8	Mine Brook	MR	P			-	NT					-	8/18/1989	-	GEN	
	Mine Brook - Unnamed Tributaries															
8	Trib. (E. of Mine Mtn.)	MR	P		1.74	-	TP	X				-	9/15/1995	SS	GEN	
8	Trib. (S. of Mine Mtn.)	MR	P		0.3	-	TP	X				-	9/15/1995	SS	GEN	
8	Mulhockaway Creek	HT	S,P		4.68	-	TP	X	X	X		S	8/13/2002	SS	GEN	
8	Neshanic River	SO	P			-	NT					S	7/25/1974	S-CT	GEN	Seasonal trout fishery. Elevated summer water temperatures do not support holdover trout.
8	Norton Brook	HT	P		2.14	-	TP	X				-	9/14/1970	SS	GEN	
8	Oakdale Creek	MR	P	None	0.77	-	TP	X						SS	GEN	
8	Peapack Brook	SO	P,M		2.31	-	TP		X			S	8/14/2002	SS	GEN	
8	Prescott Brook	HT	P		3.37	-	TM					-	7/5/1996	-	GEN	
7	Rahway River	UN	P,M			-	NT					S	10/3/1973	S-CT	GEN	Seasonal trout fishery. Elevated summer water temperatures do not support holdover trout.
9	Raritan River	SO,MI	P,M			-	NT					S	8/7/1998	S-CT	GEN	Seasonal trout fishery. Elevated summer water temperatures do not support holdover trout.
9	Raritan River (N/Br.)															
	source downstream to Ravine Lake	MR	P		5.64	-	TP		X			-	7/8/1980	SS	GEN	
	Ravine Lake dam downstream to Rt 512 bridge	MR	P		2.06	-	TM					S		S-CT	GEN	
	Rt 512 bridge downstream to confluence with S/Br Raritan	SR	P,M			-	NT					S	7/17/1974	S-CT	GEN	Seasonal trout fishery. Elevated summer water temperatures do not support holdover trout.

WR	Waterbody	County	Owner	Access	Waterbody Size		Trout Class	Reproducing Trout Species				Trout Stocked (S/F/W)	Year Last Sampled	Coldwater Mgmt Objective	Trout Regulations (yr adopted)	Comments
					Miles	Acres		Bkt	Bnt	Rbt	Lkt					
8	Raritan River (S/Br.)															
8	Budd Lk Dam to Turkey Bk	MR	P			-	NT				S,F	8/22/1969	S-CT	GEN	Seasonal trout fishery. Elevated summer water temperatures do not support holdover trout.	
8	from dam upstream of Flanders-Drakestown Rd to Turkey Bk confluence	MR	P		0.5	-	TM				S,F	8/18/1969	S-CT	GEN	Seasonal trout fishery. Elevated summer water temperatures do not support holdover trout.	
8	Turkey Bk to Claremont YTCA	MR	P		4.75	-	TP	X	X		S,F	8/18/1969	SS, YR-CT	GEN		
8	Claremont (YTCA stretch)	MR	C		1.1	-	TP	X	X		-	9/28/2001	SS, YR-CT	YTCA		
8	End of YTCA stretch to Rt 512	MR,HT	P		6.2	-	TP	X	X		S,F	9/5/1995	SS, YR-CT	GEN		
8	Rt 512 to Ken Lockwood Gorge	HT	P		1.54	-	TM				S,F		YR-CT	GEN		
8	Ken Lockwood Gorge WMA	HT	S		2.5	-	TM				S,F	8/30/1994	YR-CT	YTCA		
8	downstream KLG WMA to Packers Island	HT	P,C,M		11.23	-	TM				S,F	8/7/1970	YR-CT	GEN		
8	Packers Island to confluence with N/Br Raritan	HT,SO	P,C			-	NT				S,F	8/27/2002	S-CT	GEN	Seasonal trout fishery. Elevated summer water temperatures do not support holdover trout.	
	Raritan River (S/Br.) – Unnamed Tributaries															
8	Trib. (Long Valley)	MR	P		0.83	-	TP	X			-	7/17/1996	SS	GEN		
8	Trib. (S. of Hoffmans)	HT	S		0.86	-	TP	X			-	7/18/1996	SS	GEN		
8	Trib. (S. of Schooleys Mtn.)	MR			0.62	-	TP	X			-	7/17/1996	SS	GEN		
8	Rhinehart Brook	MR	P,S		1.85	-	TP	X	X		-	7/11/1996	SS	WTS		
10	Rock Brook	ME	P			-	NT				S		S-CT	GEN	Seasonal trout fishery. Elevated summer water temperatures do not support holdover trout.	
8	Rockaway Creek (N/Br.)															
8	source downstream to Rt 523 bridge	HT	P,M		10.09	-	TP	X	X		-	8/12/1981	SS	WTS		
8	Rt 523 bridge to	HT	P		1.37	-	TM				-		S-CT			

WR	Waterbody	County	Owner	Access	Waterbody Size		Trout Class	Reproducing Trout Species				Trout Stocked (S/F/W)	Year Last Sampled	Coldwater Mgmt Objective	Trout Regulations (yr adopted)	Comments
					Miles	Acres		Bkt	Bnt	Rbt	Lkt					
	confluence with Rockaway Ck S/Br															
8	Rockaway Creek (S/Br.)															
8	source downstream to Clinton Twp boundary	HT	P		2.58	-	TP		X			S	8/1/2002	SS, S-CT	GEN	Currently classified as trout maintenance recent sampling documented young of the year brown trout from the source of the creek to Clinton Twp boundary.
8	Clinton Twp boundary to confluence with N/Br Rockaway Creek	HT	P,M		2.66	-	TM					S	8/1/2002	S-CT	GEN	
8	Rockaway Creek	HT	P,M			-	NT					S	7/15/1969	S-CT	GEN	Seasonal trout fishery. Elevated summer water temperatures do not support holdover trout.
8	Rocky Run	HT	P		2.86	-	TP	X				-	7/14/1995	SS	GEN	
9	Roosevelt Park Pond	MI	C	FS	-	10	NT					S,F	10/19/1977	S-CT	GEN	Seasonal trout fishery. Elevated summer water temperatures do not support holdover trout.
10	Rosedale Lake	ME	C	FS	-	30	NT					S,F	9/5/1996	S-CT	GEN	Seasonal trout fishery. Elevated summer water temperatures do not support holdover trout.
8	Round Valley Reservoir	HT	S	PS,BR	-	2350	TP				X	S	11/1/2002	SS, YR-CT	TTL	
9	Seeleys Pond	UN	C	PS,BR	-	3	NT					S		S-CT	GEN	Seasonal trout fishery. Elevated summer water temperatures do not support holdover trout.
8	Sidney Brook	HT	P			-	NT					S	8/1/1991	S-CT	GEN	Seasonal trout fishery. Elevated summer water temperatures do not support holdover trout.
9	Spooky Brook Park Pond	SO	C	FS	-	13	NT					S	5/17/1970	S-CT	GEN	
8	Spruce Run	HT	P		8.37	-	TP	X	X			S	8/20/1996	SS,YR-CT	GEN	
8	Spruce Run Reservoir	HT	S	PS,BR	-	1290	TM					S	10/23/1997	S-CT	GEN	Seasonal trout fishery. Elevated summer water temperatures do not support holdover trout.
8	Stony Brook	MR	P		3.14	-	TP	X	X			-	9/1/1998	SS	WTS	

WR	Waterbody	County	Owner	Access	Waterbody Size		Trout Class	Reproducing Trout Species				Trout Stocked (S/F/W)	Year Last Sampled	Coldwater Mgmt Objective	Trout Regulations (yr adopted)	Comments
					Miles	Acres		Bkt	Bnt	Rbt	Lkt					
10	Stony Brook	ME	P			-	NT					S	10/19/1973	S-CT	GEN	Seasonal trout fishery. Elevated summer water temperatures do not support holdover trout.
8	Sun Valley Brook	MR	P,M	None	1.22	-	TP	X				-	9/18/1970	SS	GEN	
	Sydney Brook – see Sidney Brook															
8	Teetertown Brook	HT	P		1.84	-	TP	X				-	8/17/81	SS		
9	Topenemus Lake	MO	C	PS,BR	-	21	NT					S,W	8/28/1979	S-CT	GEN	Seasonal trout fishery. Elevated summer water temperatures do not support holdover trout.
8	Trout Brook	MR	P,S		1.5	-	TP	X				-	7/17/2002	SS	WTS	
8	Turkey Brook	MR	P		2.82	-	TP	X				-	8/10/2001	SS	WTS	
8	Walnut Brook	HT			3.73	-	TM					-	8/20/1982	-	GEN	
7	Warinanco Park Pond	UN	C	PS,BR	-	8	NT					S		S-CT	GEN	Seasonal trout fishery. Elevated summer water temperatures do not support holdover trout.
8	Willoughby Brook	HT	P		3.39	-	TP	X				-	8/7/2001	SS	WTS	

Water Region: Upper Delaware

WR	Waterbody	County	Owner	Access	Waterbody Size		Trout Class	Reproducing Trout Species				Trout Stocked (S/F/W)	Year Last Sampled	Coldwater Mgmt Objective	Trout Regulations (yr adopted)	Comments
					Miles	Acres		Bkt	Bnt	Rbt	Lkt					
11	Alexauken Creek	HT	P		4.68		TM						6/24/1970		GEN	
1	Allamuchy Creek	WA	S,P				NT						7/22/1970		GEN	
1	Alms House Brook															
	(Hampton)	SU	C,P		1.24		TM						8/14/1970		GEN	
	(Frankford)	SU	C,P				NT						8/14/1970		GEN	
1	Alms House Pond a.k.a. County Farm Pond	SU	C				NT				S			S-CT	GEN	
1	Andover Junction Brook	SU	P		3.6		TM				S	8/24/1998	YR-CT	GEN		
11	Assunpink Creek	MN/ME	S,C,P				NT				S	8/25/1998	S-CT	GEN		
1	Barkers Mill Brook	WA	P		1.26		TP	X			S	9/11/1991	SS YR-CT	GEN		
1	Bear Brook	WA	P		4.13		TP	X			SS	7/21/1970	SS	WTS		
1	Bear Creek	WA	P		5.59		TM				S	7/10/1996	SS	WTS		
1	Beatty's Brook	HT	C,P		1.74		TP	X	X		S	8/14/2001	SS	GEN		
1	Beaver Brook	WA	S,P				NT								GEN	
1	Beaver Brook (Hope)	WA	S,P				NT				S			S-CT	GEN	
1	Beaver Brook (Jefferson)	MR	S,P				NT								GEN	
2	Beaver Run	SU	P				NT						7/29/1970		GEN	
1	Beerskill	SU	S,P		3.22		TP	X			S	8/10/2004	SS YR-CT	GEN		
1	Bierskill – see Beerskill														GEN	
1	Big Flat Brook – see Flat Brook															
2	Black Creek															
2	Source downstream to Rt. 94 bridge	SU	P		2.46		TM						7/29/1970		GEN	
2	Rt. 94 bridge downstream to	SU	P										No Record		GEN	
2	Black Creek Tributaries		P													
2	Trib. (McAfee)	SU	P		1.25		TP	X	X				7/26/2005	SS	GEN	

WR	Waterbody	County	Owner	Access	Waterbody Size		Trout Class	Reproducing Trout Species				Trout Stocked (S/F/W)	Year Last Sampled	Coldwater Mgmt Objective	Trout Regulations (yr adopted)	Comments	
					Miles	Acres		Bkt	Bnt	Rbt	Lkt						
2	Trib. (Vernon Valley)	SU	P				NT								GEN		
1	Blair Creek																
	(Hardwick)	WA	P				NT					9/6/1989			GEN		
	(Hardwick center)	WA	P		3.24		TM				S	9/6/1989	YR-CT		GEN		
1	Blair Lake	WA	P			2					S		S-CT		GEN		
1	Blue Mountain Lake	SU	F			20					S	7/8/1981	S-CT		GEN	Anglers must walk in/portage watercraft	
	Bowers Brook		P		0.61		TP	X						SS	GEN		
1	Brass Castle Creek	WA	C,P		3.87		TP	X	X		S	7/17/2001	SS YR-CT		GEN		
1	Brookaloo Swamp (Hope) – see Honey Run	WA			2.81		TM				S	7/8/1970	YR-CT		GEN		
1	Buckhorn Creek	WA	S,P		2.57		TP		X		S	7/16/2002	YR-CT		GEN		
1	Clearview Creek	SU	P				NT					8/27/1968			GEN		
1	Clove Brook (aka Mill Bk)	SU	F,S,P		7.2		TP	X	X							WTS	
2	Clove Brook	SU	P,M				NT									GEN	
2	Clove Brook (a.k.a. Clove River)	SU												S-CT		GEN	
	Jct. of Rt. 23 and Mt. Salem Road to Rt. 565		P													GEN	
2	Clove Creek	SU	P		6.16		TM					9/10/1968				GEN	
2	Clove River – see Clove Brook	SU														GEN	
2	Clove River	SU	P		6.29		TM									GEN	
11	Colonial Lake	ME	M			10					S/F			S-CT		GEN	
1	Columbia Lake	WA	S	BR		55					S	8/28/1990	S-CT		GEN		
1	Cranberry Lake	SU	S	BR		179	TM				S	5/20/2002	S-CT		GEN		
1	Cranberry Lake Outlet Stream	SU	S,P				NT									GEN	
1	Culver's Creek	SU	S,P		2.96		TM				S	9/13/1968	YR-CT		GEN		
1	Culvers Lake	SU	P									4/28/1992				GEN	
1	Culvers Lake Brook – see Culver's Creek																

WR	Waterbody	County	Owner	Access	Waterbody Size		Trout Class	Reproducing Trout Species				Trout Stocked (S/F/W)	Year Last Sampled	Coldwater Mgmt Objective	Trout Regulations (yr adopted)	Comments
					Miles	Acres		Bkt	Bnt	Rbt	Lkt					
1	Delawanna Creek	WA	S,P				TP		X				8/18/1998	SS	GEN	
11	Delaware - Raritan Feeder Canal	HT/ME	S								S			S-CT	GEN	
11	Delaware River - Unnamed Tributaries														GEN	
11	Trib.(Holland)	HT	P		2.45		TP		X					SS	GEN	
1	Trib. (Knowlton)	WA	P		1.45		TP		X					SS	GEN	
1	Dry Brook	SU	P,M				NT				S	7/23/1998	S-CT	GEN		
1	Dunnfield Creek	WA	S		3.79		TP	X	X				8/6/1970	SS	WTS	
11	Everittstown Brook - see Nishisakawick Creek														GEN	
11	Fiddlers Creek	ME	P		2.48		TM						8/21/1991		GEN	
1	Flat Brook															
1	Saw Mill Pond to 100 ft above Crigger Rd	SU	S				NT				S			S-CT	GEN	(No in-season closure)
1	100 ft above Crigger Rd to Parker Bk	SU	S				NT				S,F			YR-CT	TS-CI	
1	Parker Bk to Rt. 206	SU	S,P				TP	X	X		S,F			YR-CT	TS-CI	
1	Rt. 206 to, but not including Blewitt Tract	SU	S				TP	X	X		S,F			YR-CT	FFA	
1	Blewett Tract	SU	F				TP		X		S,F			YR-CT	FFA	
1	Downstream boundary of Blewitt T. to Roy bridge	SU	F,S				TM				S,F			YR-CT	FFA	
1	Roy bridge to Delaware River	SU	F,S				TM				S,F			YR-CT	TS-CI	
1	Forked Brook	SU	S				TP	X					8/22/1985	SS	GEN	
2	Franklin Pond Creek	SU	S,P		1.91		TP	X	X		S		8/31/1994	YR-CT	GEN	
11	Frenchtown Brook - see Nishisakawick Creek															
1	Furnace Brook	WA	S,C,P		1.34		TP		X		S		8/23/1990	SS YR-CT	GEN	
1	Furnace Lake	WA	C	BR		53					S/W		8/29/1952	S-CT	GEN	
1	Gardners Lake	SU	S				TM						8/29/1952		GEN	
2	Glenwood Brook	SU	P		3.23		TM				S		8/6/1998	YR-CT	GEN	

WR	Waterbody	County	Owner	Access	Waterbody Size		Trout Class	Reproducing Trout Species				Trout Stocked (S/F/W)	Year Last Sampled	Coldwater Mgmt Objective	Trout Regulations (yr adopted)	Comments
					Miles	Acres		Bkt	Bnt	Rbt	Lkt					
11	Hakihokake Creek (Milford)	HT	P				TP		X			S	9/1/1988	YR-CT	GEN	
11	Hakihokake Creek (a.k.a. Milford Brook)	HT	P				NT							YR-CT	GEN	
11	Hakihokake Creek - Unnamed Tributaries		P												GEN	
11	Hakihokake Creek (trib.)(Wydner)	HT	P		2.63		TP		X			S		YR-CT	GEN	
1	Halfway House Brook	WA			1.78		TP	X					9/6/1989	SS	GEN	
2	Hamburg Creek															
	(Hamburg Mts.)	SU	S,P		1.06		TM						8/6/1998		GEN	
	(Hardistonville)	SU	S,P				NT						8/6/1998		GEN	
1	Hances Brook	WA	S,P		1.82		TP	X					8/5/1970	SS	WTS	
2	Hanford Brook	SU	P				NT						6/18/1970		GEN	
11	Harihokake Creek															
	(Frenchtown)	HT	P		3.41		TM								GEN	
	(Alexandria)	HT	P				NT								GEN	
1	Hatchery Brook – see Trout Brook				3.11		TM								GEN	
1	Honey Run	WA	P		4.73		TM					S	7/8/1970	YR-CT	GEN	
1	Independence Creek	WA	P				TM/NT						8/1/1991		GEN	
1	Jacksonburg Creek	WA	P		6.27		TM					S	7/10/1970	YR-CT	GEN	
11	Jacobs Creek	ME	P												GEN	
1	Knowlton Brook	WA	P		3.42		TP	X						SS	GEN	
1	Kurtenbach's Brook	MR	S,P		0.61		TP	X						SS	GEN	
1	Kymer Brook	SU	P				NT						8/26/1970		GEN	
1	Lake Aeroflex	SU	S	BR		101	TM					S/W	9/25/1995	YR-CT	HTL	
1	Lake Hopatcong	SU	S	BR,PS		2,685	TM					S		S-CT	GEN	Trout allocation based on YR strategy
1	Lake Illif	SU	M			37	TM								GEN	
1	Lake Marcia	SU	S			19									GEN	
1	Lake Musconetcong	SU	S			329						S		S-CT	GEN	

WR	Waterbody	County	Owner	Access	Waterbody Size		Trout Class	Reproducing Trout Species				Trout Stocked (S/F/W)	Year Last Sampled	Coldwater Mgmt Objective	Trout Regulations (yr adopted)	Comments
					Miles	Acres		Bkt	Bnt	Rbt	Lkt					
1	Lake Ocquittunk	SU	S,W			8					S/W		S-CT	GEN		
2	Lake Rutherford	SU	P				TM						S-CT	GEN		
1	Little Flat Brook	SU	S,P		10.42		TP		X		S	8/18/1988	YR-CT	GEN		
1	Little Swartswood Lake	SU	S,W			75	NT				S/W		S-CT	GEN		
11	Little York Brook	HT	P		3.28		TP	X				8/7/2001	SS	WTS		
2	Livingston Ponds Brook	SU	P		2.36		TP	X	X			7/26/1990	SS	GEN		
11	Lokatong Creek	HT	M,P		4.39		TM				S		YR-CT	GEN		
1	Lommasons Glen Brook	WA	P		1.61		TP	X					SS	GEN		
2	Longhouse Brook	SU	P				NT							GEN		
1	Lopatcong Creek															
		WA	C,P		5.62		TP	X	X		S		Y-CT	GEN		
		WA	C,P		2.65		TM				S		Y-CT	GEN		
1	Lopatcong Creek - Unnamed Tributaries															
1	Trib.(Uniontown)	WA			1.23		TP	X					SS	GEN		
2	Lounsbery Hollow Brook	SU			3.75		TM					8/13/1970		GEN		
1	Lubbers Run	SU			5.49		TM				S	8/21/2001	YR-CT	GEN		
1	Merrill Creek	WA	P				TP	X				8/1/1984	SS	WTS		
1	Merrill Creek Reservoir	WA	P	BR		650	TM				S		YR-CT	TTL	Ice fishing not allowed	
1	Mill Brook	WA	S,P		2.78		TP						SS	GEN		
1	Mine Brook - Unnamed Tributaries															
1	Trib. (Drakestown)	MR	P				TP	X					SS	GEN		
1	Trib. (Washington)	MR	P				TP	X				8/18/1989	SS	GEN		
11	Moore Creek (Hopewell)	ME	P		4.26		TM					8/31/1972		GEN		
1	Mountain Lake (Liberty)	WA	S	BR,PS		122	TM				S	6/16/2000	YR-CT	GEN	Boat ramp is private	
1	Mountain Lake Brook (Liberty)	WA	P		1.99		TM					8/21/1990		GEN		
1	Muddy Brook – see Honey Run	WA					TM				S	7/19/1988	YR-CT	GEN		
	Mud Pond Outlet Stream	SU			2.86		TP						SS	GEN		

WR	Waterbody	County	Owner	Access	Waterbody Size		Trout Class	Reproducing Trout Species				Trout Stocked (S/F/W)	Year Last Sampled	Coldwater Mgmt Objective	Trout Regulations (yr adopted)	Comments
					Miles	Acres		Bkt	Bnt	Rbt	Lkt					
1	Musconetcong River (Hackettstown)	SU,MR	S,P		38.22		TM					S		YR-CT	STCA	Section of it is STCA & float stocked
1	Musconetcong River - Unnamed Tributaries															
1	Trib. (Anderson)	WA			2.23		TP	X						SS	GEN	
1	Trib. (Changewater)	WA			3.11		TP	X						SS	GEN	
1	Trib. (Deer Park Pond)	WA			0.69		TM	X				8/6/1987		SS	GEN	
1	Trib. (Franklin)	WA			2.27		TP	X						SS	GEN	
1	Trib. (Lebanon)	HT			1.6		TP	X						SS	GEN	
1	Trib. (Port Murray)	WA			2.47		TP	X						SS	GEN	
1	Trib. (S. of Schooley Mtn.)	MR			0.76		TP	X	X					SS	GEN	
1	Trib. (Waterloo)						TP	X						SS	GEN	
	Trib. (North of Hackettstown)	WA			1.33		TM								GEN	
1	Neldon Brook – see Swartswood Creek	SU			2.13		TM					S	7/45/81	YR-CT	GEN	
1	New Wawayanda Lake - see Lake Aeroflex					101	TM					S	8/15/2001	YR-CT	HTL	
11	Nishisakawick Creek (aka Frenchtown Bk)	HT	P				NT					S	7/20/1990	S-CT	GEN	
2	Papakating Creek	SU	P		3.13		TM						8/11/1970		GEN	
2	Papakating Creek (W/Br.)(Wantage)	SU	P				NT					S	9/18/1968	S-CT	GEN	
1	Parker Brook (Montague)	SU	S		3.68		TP	X					8/27/1968	SS	WTS	
1	Paulina Creek	WA	P		1.23		TM						7/26/1994		GEN	
	Paulins Kill (Blairstown)	WA	S,P		19.48		TM								GEN	2 sections float-stocked
1	Paulins Kill - Unnamed Tributaries															
1	Trib. (E. of Walnut Valley)	WA	P		2.56		TM								GEN	
1	Trib. (Emmons Sta.)	SU	P		2.31		TP		X					SS	GEN	
1	Trib. (Stillwater Sta.) (a.k.a. Roy Spring Bk)	SU	P		2.37		TP		X			S		SS YR-CT	GEN	
1	Trib. (Stillwater)		P		1.2		TM								GEN	

WR	Waterbody	County	Owner	Access	Waterbody Size		Trout Class	Reproducing Trout Species				Trout Stocked (S/F/W)	Year Last Sampled	Coldwater Mgmt Objective	Trout Regulations (yr adopted)	Comments
					Miles	Acres		Bkt	Bnt	Rbt	Lkt					
1	Paulins Kill (E/Br.)	SU	S,P		2.49		TP			X		S		YR-CT	YTCA	Section of it is YTCA
1	Paulins Kill (E/Br.) - Unnamed Tributaries															
1	Trib. (Sussex Mills)	SU	P				NT								GEN	
1	Paulins Kill (W/Br.)	SU	P				TM					S		YR-CT	GEN	
1	Paulins Kill Lake	SU	P			157	TM						6/26/1951		GEN	
1	Pequest River		S,P		5.63		TM					S,F		YR-CT	GEN,STCA	Section of it is YTCA
1	Pequest River - Unnamed Tributaries															
1	Trib. (Petersburg)	WA	P		0.67		TP	X						SS	GEN	
	Trib. (Janes Chapel)		S,P		1.88		TM								GEN	
11	Plum Brook	HT	P		5.02		TM						7/2/1970		GEN	
2	Pochuck Creek	SU	S,P				NT								GEN	
1	Pohatcong Creek															
	Source to Rt. 31	WA	S,P		12.87		TM					S		YR-CT	GEN	
	Rt. 31 to Delaware River	WA	P		4.25		TP/TM					S,F		YR-CT	TS-CI	
1	Pohatcong Creek - Unnamed Tributaries															
1	Trib. (Greenwich)	WA	P		1.52		TP	X	X				7/16/1987	SS	GEN	
1	Trib. (New Village)	WA	P		1.76		TP	X					9/4/1986	SS	GEN	
1	Trib. (Willow Grove)	WA	P		1.34		TP	X					7/6/1987	SS	GEN	
1	Pond Brook (Middleville)	SU	S,P				NT					S	8/8/1968	S-CT	GEN	
1	Pophandusing Creek (Belvidere)	WA	P		2		TM					S	7/11/1990	YR-CT	GEN	
1	Pophandusing Creek (Hazen/Belvidere)	WA	P		1.89		TP		X				7/11/1990	SS	GEN	
1	Roaring Rock Brook – see Brass Castle Creek	WA			3.87		TP	X	X			S	7/17/2001	SS YR-CT	GEN	
1	Roy Spring Brook – see Paulins Kill (trib.)(Stillwater Sta.)				2.37		TP		X						GEN	
1	Sandyston Creek (Sandyston)	SU	F		1.53		TP						8/4/1970	SS	GEN	
1	Sawmill Pond (a.k.a. Saw	SU	S			20	NT						9/15/1971		GEN	

WR	Waterbody	County	Owner	Access	Waterbody Size		Trout Class	Reproducing Trout Species				Trout Stocked (S/F/W)	Year Last Sampled	Coldwater Mgmt Objective	Trout Regulations (yr adopted)	Comments
					Miles	Acres		Bkt	Bnt	Rbt	Lkt					
	Mill Lake)															
2	Sawmill Pond Brook	SU	S				NT				S	7/31/1985	S-CT	GEN		
1	Schooley's Mtn. Brook	MR	P		2.03		TP	X				8/5/1970	SS	GEN		
	Shabbecong Creek		P		3.63		TM									
1	Shawanni Creek	SU	F		1.41		TP	X				8/11/1970	SS	GEN		
1	Shimers Brook	SU	F,P		3.79		TP	X	X			8/27/1996	SS	GEN		
2	Silver Lake (Hamburg Mtn. WMA)	SU	S	BR			TM				S/W		S-CT	GEN		
1	Silver Lake (Hope)	WA	P				TM					7/15/1978		GEN		
2	Sparta Glen Brook	SU	M,P		2.84		TP	X				7/31/1990	SS	GEN		
1	Sparta Junction Brook	SU	P		2.29		TM					7/23/1970		GEN		
2	Spring Brook	HT	P				TP	X				5/20/1982	SS	GEN		
	Spring Brook	SU	P		2.41		TP	X					SS	GEN		
11	Spring Mills Brook															
	(Milford)	HT					TP				S	8/7/2001	SS	GEN		
	(Spring mills)	HT			4.2		TP		X		S	8/7/2001	YR-CT	GEN		
1	Stephensburg Creek	MR	S,P		1.79		TP	X				8/5/1970	SS	WTS		
1	Stony Brook (Knowlton)	WA	F,P		4.38		TP	X	X			9/1/1998	SS	GEN		
1	Stony Brook (Stokes S.F.)	SU	S		1.2		TP	X					SS	WTS		
1	Stony Lake (Stokes S.F.)	SU	S	NB		15	TM				S	9/10/1971	S-CT	GEN		
11	Swan Creek	ME	P				NT					8/10/1970		GEN		
1	Swartswood Creek (aka Neldon Bk)	SU	S,P		2.13		TM				S	7/10/1970	YR-CT	GEN		
1	Swartswood Lake	SU	S	BR		494	TM				S	10/18/2001	YR-CT	HTL	Float stocked (P&F)	
1	Tar Hill Brook		P													
	(Source- Lake Lenape)	SU			2.08		TM					8/27/1970		GEN		
	(Lake Lenape- And. Junct. Brook)	SU					NT					8/27/1970		GEN		
1	Tillman Brook	SU	S		2.54		TP	X				8/11/1970	SS	GEN		

WR	Waterbody	County	Owner	Access	Waterbody Size		Trout Class	Reproducing Trout Species				Trout Stocked (S/F/W)	Year Last Sampled	Coldwater Mgmt Objective	Trout Regulations (yr adopted)	Comments
					Miles	Acres		Bkt	Bnt	Rbt	Lkt					
2	Town Brook	SU	P		3.67		TM						8/30/1990		GEN	
1	Trout Brook (Allamuchy)	WA	P				NT						7/22/1970		GEN	
1	Trout Brook (Hackettstown)	WA	S,P												GEN	
1	Trout Brook (Hope)	WA	S,P		5.11		TM				S		7/10/1996	YR-CT	GEN	
1	Trout Brook (Middleville)															
	(Source- Pond Brook)	SU	P		4.74		TP	X						SS	GEN	
	(Pond Brook-Paulins Kill)	SU	P				NT								GEN	
1	Trout Brook (Tranquility)	WA	P		3.01		TP	X						SS	GEN	
	Tunnel Brook	WA	P		1.7		TP	X						SS		
1	Turkey Hill Brook	HT	P		3		TP		X					SS	WTS	
1	Tuttles Corner Brook	SU	S		2.46		TP	X			S		8/4/1970	SS YR-CT	GEN	
1	Van Campens Brook	SU	F		7.74		TP	X	X	X			8/30/1984	SS	WTS	
2	Walkill River	SU	F,P				TM/NT				S,F			YR/S-CT	GEN	
2	Walkill River - Unnamed Tributaries															
2	Trib. (Ogdensburg)	SU	P		1.12		TP	X						SS	GEN	
2	Trib. (Sparta)	SU	P		1.1		TP	X						SS	GEN	
2	Wantage Brook	SU	P				NT						8/25/1970		GEN	
	Warford Creek		P		3.4											
2	Wawayanda Creek	SU	S,P				TM				S		8/30/1990	YR-CT	GEN	
2	Wawayanda Creek - Unnamed Tributaries		S													
2	Trib. (Wawayanda)	SU					NT								GEN	
2	Wawayanda Lake	SU	S	BR		255	TM				S			YR-CT	HTL	Float stocked (P&F)
1	Weldon Brook	MR	S,P		2.69		TM						9/9/1987		GEN	
1	West Portal Brook	HU	P		3.41		TP	X	X				7/8/2002	SS	GEN	
1	White Brook	SU	F		1.93		TP	X					6/18/1970	SS	GEN	
1	White Lake (Sussex Co.)	SU	P				TM								GEN	

WR	Waterbody	County	Owner	Access	Waterbody Size		Trout Class	Reproducing Trout Species				Trout Stocked (S/F/W)	Year Last Sampled	Coldwater Mgmt Objective	Trout Regulations (yr adopted)	Comments
					Miles	Acres		Bkt	Bnt	Rbt	Lkt					
1	White Lake (Warren Co.)	WA	C			65	TM					S		YR-CT	HTL	
11	Wichecheoke Creek															
11	Confluence with Plum Brook	HT	P		4.24		TM						7/2/1970		GEN	
11	Source downstream to confluence with Plum Brook	HT	P				NT						6/24/1970		GEN	
11	Covered Bridge (Rt. 604), Sergentsville, to	HT	P										7/28/1977		GEN	
2	Wildcat Brook	SU	P				NT						8/31/1994		GEN	
2	Willow Brook (aka Quarryville Bk)	SU	P		3.98		TM						8/31/1994		GEN	
1	Wills Brook	MR	P		3.01		TM						9/4/1970		GEN	
1	Yards Creek	SU	P		2		TP		X				7/18/2002	SS	GEN	

This Page Intentionally Left Blank