

ATTENTION ANGLERS

2022 NJ Recreational Size Limits, Possession Limits & Seasons

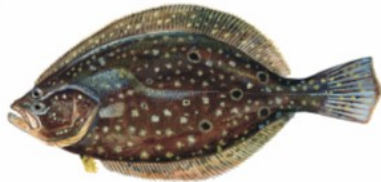


Hard Clam 1.5 inches

Recreational Limit – 150 clams

No harvest on Sunday

Shellfish license required



Summer Flounder (Fluke)

Delaware Bay and Tributaries: 3 fish at 17 inches

Island Beach State Park: 2 fish at 16 inches

All Other Marine Waters: 2 fish at 17 inches to less than 18 inches, and 1 fish at 18 inches or greater

Open Season: May 2 – Sept. 27



Weakfish

1 fish at 13 inches

Open Season: Jan. 1 – Dec. 31



Black Sea Bass

10 fish at 13 inches May 17 – June 19

2 fish at 13 inches July 1 – August 31

10 fish at 13 inches Oct. 7—Oct. 26

15 fish at 13 inches Nov. 1—Dec. 31



Bluefish

Private/Shore Angler - 3 fish

For-Hire Vessel - 5 fish

Open Season: Jan. 1 – Dec. 31

- Fish are measured from the tip of the snout to tip of the tail (except Black Sea Bass and Sharks).
- Filleting of fish with a minimum size limit at sea is prohibited. See the Marine Digest or the Fish & Wildlife website for exceptions.



Tautog 15 inches

4 fish Jan. 1 – Feb. 28

4 fish Apr. 1 – Apr. 30

1 fish Aug. 1 – Nov. 15

5 fish Nov. 16 – Dec. 31



Striped Bass or Hybrid Striped Bass

1 fish at 28 inches to less than 38 inches

See Digest for Striped Bass Bonus Program and Circle Hook Requirements

Del. River and tributaries Calhoun St. Bridge, Trenton to Salem River and tributaries

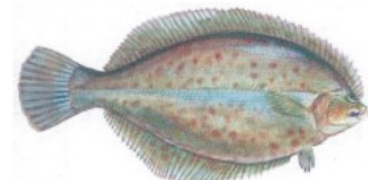
Open Mar. 1 – Mar. 31 & June 1 – Dec. 31

Atlantic Ocean

0-3 miles from shore, no closed season

Greater than 3 miles from shore, closed

All other marine waters, open Mar. 1 – Dec. 31



Winter Flounder

2 fish at 12 inches

Open Season: Mar. 1 – Dec. 31



Shark

1 fish per vessel

See NMFS for size, season, and gear restrictions

PROHIBITED SPECIES
See the Marine edition of the NJ Fish & Wildlife Digest or Fish & Wildlife's website for a complete list.

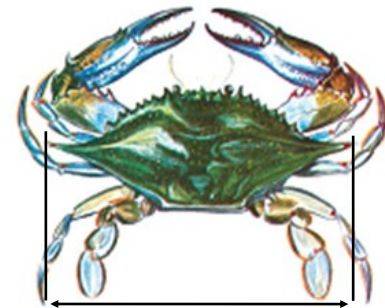
Other Species	Possession Limit	Total Length
American Eel	25	9"
Black Drum	3	16"
Cobia	1 per vessel	37"
Cod	NO LIMIT	21"
Haddock	NO LIMIT	18"
King Mackerel	3	23"
Pollock	NO LIMIT	19"
Red Drum	1	18 to less than 27"
River Herring	CLOSED	N/A
Scup (Porgy)	50	10"
Shad	6	NO LIMIT

- No more than 3 American shad in Del. Bay, River & tributaries
- No American shad in all other waters

Spanish Mackerel	10	14"
American Lobster	6	3 3/8" to 5 1/4" Carapace Length

- LMA 4 Open Season: Jan. 1 - Apr. 29 & June 1 - Dec. 31
- LMA 5 Open Season: Jan. 1 - Jan. 31 & Apr. 1 - Dec. 31

Jonah Crab	50	4 3/4" Carapace Width
------------	----	-----------------------



Blue Crab

(measured point to point)

Peeler or Shedder — 3 inches

Soft — 3½ inches

Hard — 4½ inches

Recreation Limit — One Bushel

Crab pot/Trot line Seasons:

Delaware Bay & tributaries

Apr. 6 — Dec. 4

All other waters

Mar. 15 — Nov. 30

Register before fishing! It's free, easy, and required.

SaltwaterRegistry.nj.gov

New Jersey Department of Environmental Protection
Fish and Wildlife
www.njfishandwildlife.com

